



Golden Grove Estate
 Bushland Way, Jackass Flat
 Lot 202

Facade: Kingston (with Eaves) **House:** 18.43 sq **Land:** 628 m2

3
 2
 1
 2

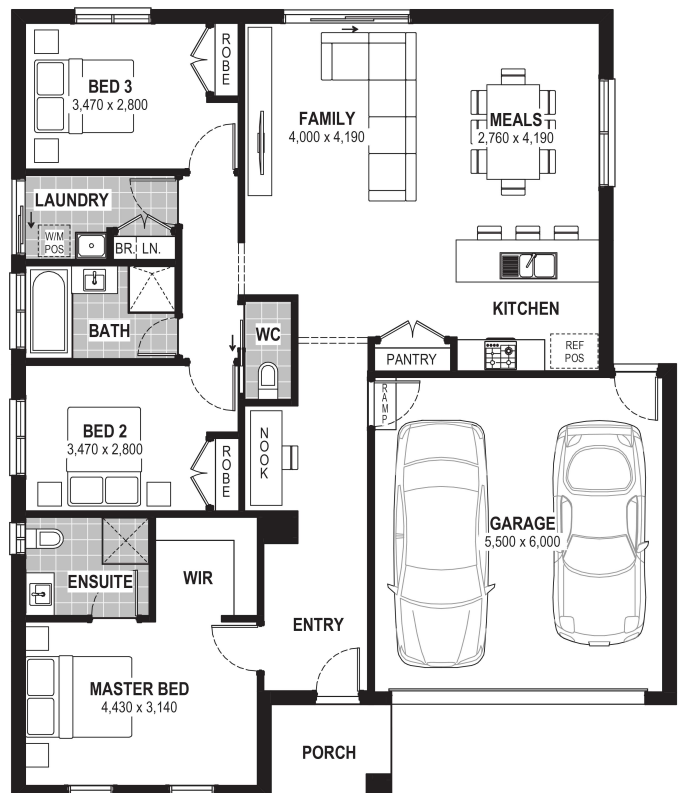
Rockford 18

Inclusions

- Bluescope Steel House Frame
- Colorbond Roof with Sarking
- 7 Star Energy Efficient
- European-styled (uPVC) Double Glazed Windows & Doors
- Tiled Splashback to Kitchen
- Range of Colour Schemes
- Flyscreens with Aluminium Mesh
- Remote Garage Door with Openers
- Bushfire Compliance up to BAL 12.5
- 50 Year Structural Guarantee
- Evaporative Cooling
- Laminate Flooring & Carpet Throughout
- Site Costs Allowance Included

Contact:

Melissa Mcaliece
 0409 437 494
 houseandland@jgking.com.au



*Conditions apply. Speak to your New Home Advisor for further details