



**Golden Grove Estate**  
 Bushland Way, Jackass Flat  
 Lot 201

Facade: Midas

House: 20.39 sq Land: 629 m2

4  
 2  
 2  
 2

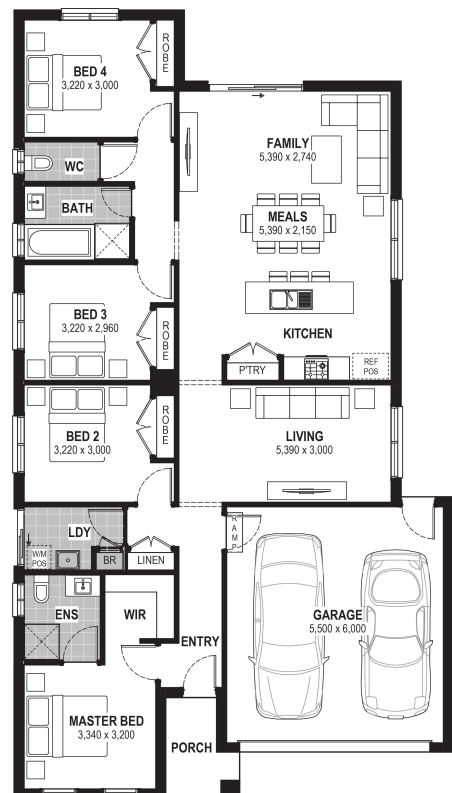
**Spice 20**

**Inclusions**

- Bluescope Steel House Frame
- Colorbond Roof with Sarking
- 7 Star Energy Efficient
- European-styled (uPVC) Double Glazed Windows & Doors
- Tiled Splashback to Kitchen
- Range of Colour Schemes
- Flyscreens with Aluminium Mesh
- Remote Garage Door with Openers
- Bushfire Compliance up to BAL 12.5
- 50 Year Structural Guarantee
- Evaporative Cooling
- Laminate Flooring & Carpet Throughout
- Site Costs Allowance Included

**Contact:**

Melissa Mcaliece  
 0409 437 494  
 houseandland@jgking.com.au



\*Conditions apply. Speak to your New Home Advisor for further details