



**Golden Grove Estate**  
 Bushland Way, Jackass Flat  
 Lot 143

**Facade:** Sahara

**House:** 19.12 sq **Land:** 512 m2

4  
 2  
 1  
 2

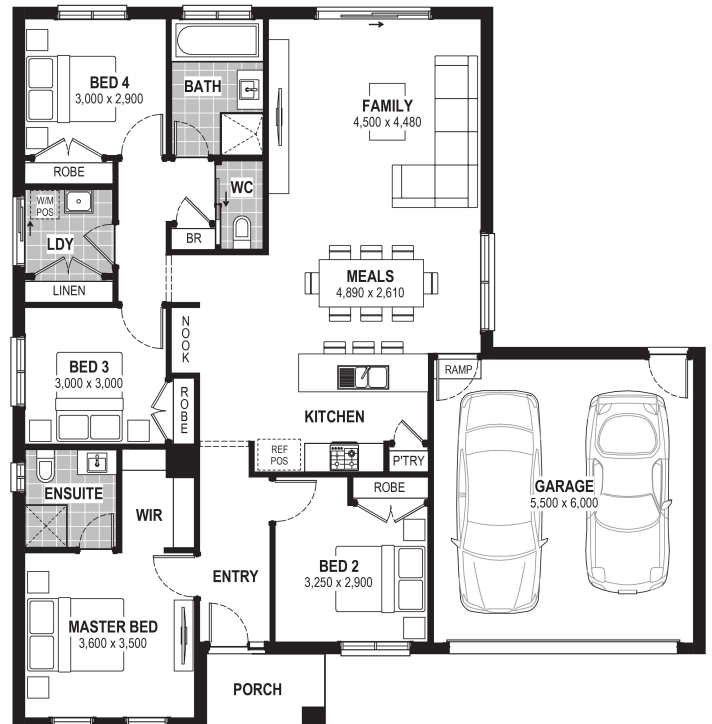
## Honey 19

### Inclusions

- Bluescope Steel House Frame
- Colorbond Roof with Sarking
- 7 Star Energy Efficient
- European-styled (uPVC) Double Glazed Windows & Doors
- Tiled Splashback to Kitchen
- Range of Colour Schemes
- Flyscreens with Aluminium Mesh
- Remote Garage Door with Openers
- Bushfire Compliance up to BAL 12.5
- 50 Year Structural Guarantee
- Evaporative Cooling
- Laminate Flooring & Carpet Throughout
- Site Costs Allowance Included

### Contact:

Melissa Mcaliece  
 0409 437 494  
 houseandland@jgking.com.au



\*Conditions apply. Speak to your New Home Advisor for further details